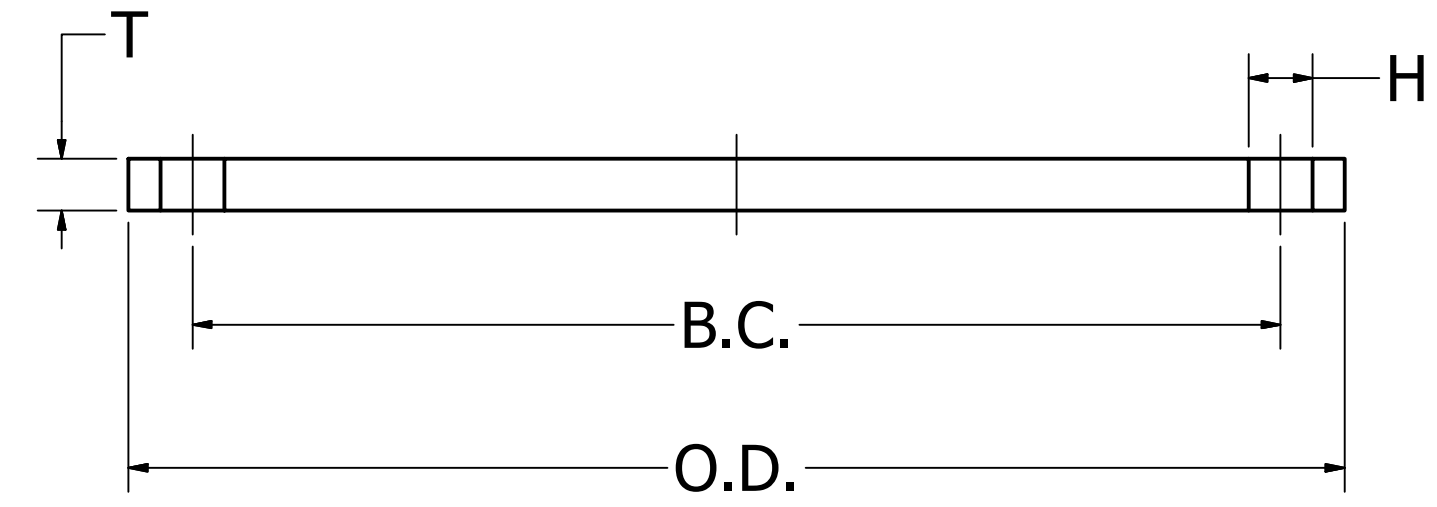
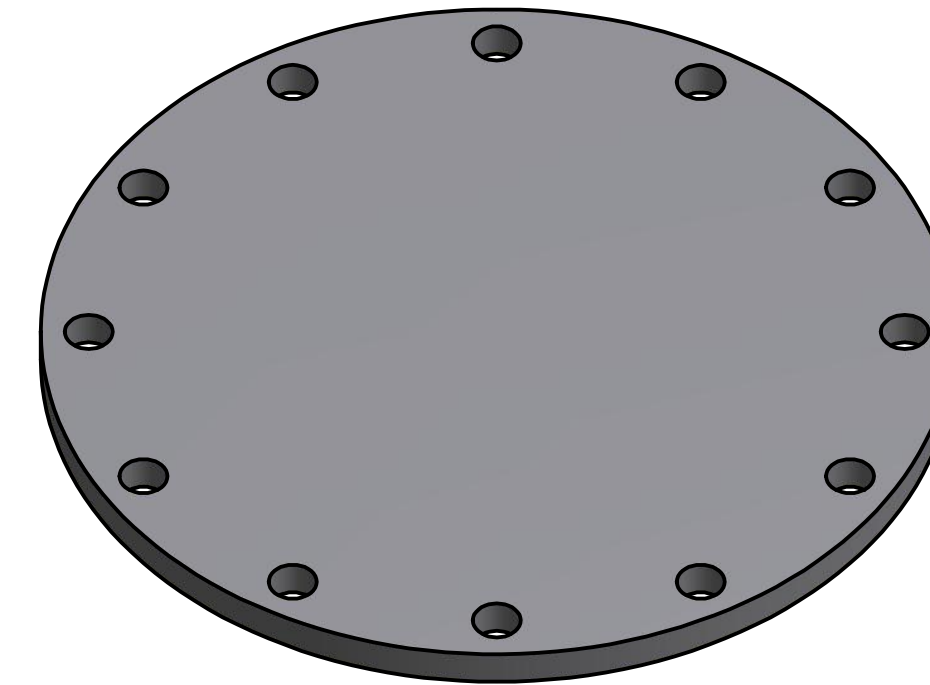


Material: A36 Plate Steel

REVISION HISTORY		
REV	DESCRIPTION	DATE
1	VALID	08/02/11

Dimensions							
Pipe Diameter (in)	O.D.	Bolt Hole Circle (BC)	Bolt Count	Bolt Hole Size (H)	T	Weight (lbs)	Operating Pressure (psi)
1.5"	5.000	3.880	4	0.625	0.630	3.5	275
2"	6.000	4.750	4	0.750	0.630	5.0	275
2.5"	7.000	5.500	4	0.750	0.630	7.0	275
3"	7.500	6.000	4	0.750	0.630	8.0	275
4"	9.000	7.500	8	0.750	0.630	11.0	275
5"	10.000	8.500	8	0.880	0.630	14.0	275
6"	11.000	9.500	8	0.880	0.690	18.0	275
8"	13.500	11.750	8	0.880	0.690	28.0	188
10"	16.000	14.250	12	1.000	0.690	38.0	126
12"	19.000	17.000	12	1.000	0.810	63.0	117
14"	21.000	18.750	12	1.125	0.940	89.0	140
16"	23.500	21.250	16	1.125	1.000	118.0	123
18"	25.000	22.750	16	1.125	1.060	142.0	117
20"	27.500	25.000	20	1.125	1.130	184.0	111
22"	29.500	27.250	20	1.375	1.190	221.0	104
24"	32.000	29.500	20	1.375	1.250	275.0	99
26"	34.250	31.750	24	1.375	1.310	329.0	90
28"	36.500	34.000	28	1.375	1.310	373.0	83
30"	38.750	36.000	28	1.375	1.380	445.0	80
32"	41.750	38.500	28	1.625	1.500	557.0	83
36"	46.000	42.750	32	1.625	1.630	737.0	80
40"	50.750	47.250	36	1.625	1.630	900.0	—
42"	53.000	49.500	36	1.625	1.750	1057.0	68
48"	59.500	56.000	44	1.625	1.750	1334.0	52
54"	66.250	62.750	44	1.875	2.130	2008.0	--
60"	73.000	69.250	52	1.875	2.250	2579.0	—



Notes

Dimensions comply to AWWA C207-86, table 1
 Class 150 Bolt Circle. Mates with ANSI B16.5, B16.47, AWWA C207
 Finish: Red oxide primer or Hot dipped galvanized

DRAWN	8/2/2011	
Matt Graff		
ENG	8/2/2011	
Ellis Clark		
QA	8/9/2011	
Adil Nasir		TITLE
VPOP	9/1/2011	Blind Plate Steel Submittal Sheet
Duncan Schlicht		SIZE PART NO
UNLESS OTHERWISE NOTED, ALL DIMENSIONS IN INCHES		C Blind Plate Steel Submittal
SCALE		SALES NO
		REV 1 SHEET 1 OF 1

Ongoing engineering design efforts may affect the technical information listed in our publications.