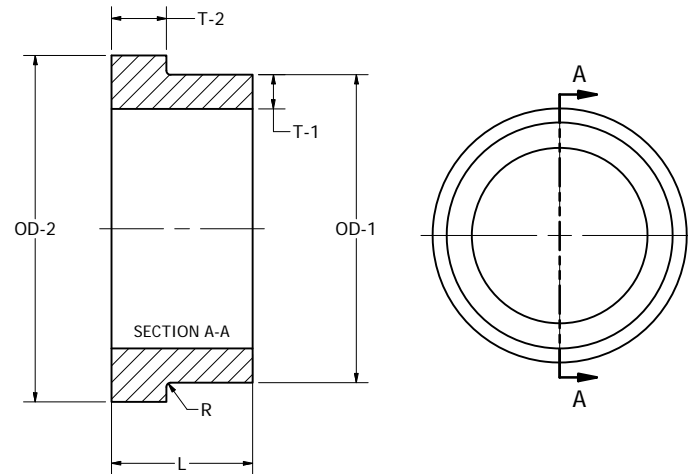


Material: PE 4710

REVISION HISTORY		
REV	DESCRIPTION	DATE
1	VALID - ORIGINAL DWG	05/19/11
2	EDIT L COLUMN	07/27/11
3	EDIT T-2 DIMENSIONS	09/02/11
4	ADD NSF NOTE	10/28/11

Wall Thickness and Hub Height (2" - 16")								
Size	SDR's							
	7		9		11		17	
	T-1	T-2	T-1	T-2	T-1	T-2	T-1	T-2
2	0.339	0.450	0.264	0.400	0.217	0.402	0.138	0.402
3	0.500	0.600	0.389	0.598	0.319	0.598	0.205	0.598
4	0.642	1.000	0.500	0.800	0.409	0.800	0.264	0.800
6	0.945	1.200	0.736	0.920	0.602	0.799	0.390	0.799
8	1.232	1.598	0.958	1.200	0.783	0.799	0.508	0.799
10	1.535	1.900	1.194	1.490	0.976	1.299	0.634	0.902
12	1.823	2.299	1.417	1.770	1.157	1.500	0.752	1.000
14	2.000	2.598	1.556	1.950	1.272	1.701	0.823	1.098
16	2.287	3.000	1.778	2.220	1.453	1.902	0.941	1.201



Flange Adapter Dimensions					
Size	Type	OD-1	OD-2	L	R
2	IPS	2.375	4.000	5.984	0.354
3	IPS	3.500	5.000	5.984	0.354
4	IPS	4.500	6.598	5.984	0.433
6	IPS	6.625	8.500	7.992	0.433
8	IPS	8.625	10.598	9.016	0.433
10	IPS	10.750	12.799	11.000	0.433
12	IPS	12.750	15.252	11.000	0.433
14	IPS	14.000	17.500	11.000	0.433
16	IPS	16.000	20.000	12.000	0.433
18	IPS	18.000	21.098	12.000	0.500
20	IPS	20.000	23.500	12.000	0.500
22	IPS	22.000	25.600	12.000	0.500
24	IPS	24.000	27.900	14.000	0.500
26	IPS	26.000	29.750	14.000	0.500
28	IPS	28.000	32.000	14.000	0.500
30	IPS	30.000	34.000	14.000	0.500
32	IPS	32.000	36.125	14.000	0.500
34	IPS	34.000	38.125	14.000	0.500
36	IPS	36.000	40.500	14.000*	0.500
42	IPS	42.000	47.125	21.000	0.500
48	IPS	48.000	53.500	21.000	0.500
54	IPS	54.000	59.625	21.000	0.500
63	IPS	63.000	66.790	21.000	0.500

Wall Thickness and Hub Height (18" - 63")																				
Size	SDR's																			
	7		9		11		13.5		15.5		17		19		21		26		32.5	
	T-1	T-2	T-1	T-2	T-1	T-2	T-1	T-2	T-1	T-2	T-1	T-2	T-1	T-2	T-1	T-2	T-1	T-2	T-1	T-2
18	2.571	3.858	2.000	2.500	1.638	2.100	1.333	2.100	1.161	2.100	1.059	1.400	0.947	1.250	0.857	1.250	0.692	1.250	0.554	1.250
20	2.857	3.630	2.222	3.490	1.819	2.300	1.481	2.300	1.290	2.300	1.177	1.500	1.053	1.390	0.952	1.390	0.769	1.390	0.615	1.390
22	3.143	3.920	2.444	3.920	2.000	2.500	1.630	2.500	1.419	2.500	1.295	1.600	1.158	1.520	1.048	1.520	0.846	1.520	0.677	1.520
24	3.429	4.360	2.667	4.360	2.181	2.900	1.778	2.900	1.548	2.900	1.413	1.800	1.263	1.667	1.143	1.667	0.923	1.667	0.738	1.667
26	3.714	4.643	2.889	4.643	2.364	2.955	1.926	2.955	1.677	2.955	1.529	2.955	1.368	1.711	1.238	1.711	1.000	1.711	0.800	1.711
28			3.111	5.000	2.545	3.182	2.074	3.182	1.806	3.182	1.647	3.182	1.474	1.842	1.333	1.842	1.077	1.842	0.862	1.842
30			3.333	5.357	2.727	3.409	2.222	3.409	1.935	3.409	1.765	3.409	1.579	1.974	1.429	1.974	1.154	1.974	0.923	1.974
32			3.556	5.714	2.909	3.636	2.370	3.636	2.065	3.636	1.882	3.636	1.684	2.105	1.524	2.105	1.231	2.105	0.985	2.105
34			3.778	6.071	3.091	3.864	2.519	3.864	2.194	3.864	2.000	3.864	1.789	2.237	1.619	2.237	1.308	2.237	1.046	2.237
36			4.000	6.429	3.273	4.091	2.667	4.091	2.323	4.091	2.118	4.091	1.895	2.368	1.714	2.368	1.385	2.368	1.108	2.368
42					3.818	4.773	3.111	4.773	2.710	4.773	2.471	4.773	2.211	2.763	2.000	2.763	1.615	2.763	1.292	2.763
48					4.364	5.455	3.556	5.455	3.097	5.455	2.824	5.455	2.526	3.158	2.286	3.158	1.846	3.158	1.477	3.158
54														2.571	3.553	2.077	3.553	1.662	3.553	
63														3.000	4.145	2.423	4.145	1.938	4.145	

*Length is 16.500" for 36" SDR9 only.



Notes

- 2" - 24" meet requirements of ASTM D2513
- 2" - 48" meet requirements of ASTM D3261
- 4" - 63" meet requirements of AWWA C906
- Certified to NSF/ANSI 61

DRAWN	Matt Graff	5/19/2011
ENG	Ellis Clark	9/1/2011
QA	Adil Nasir	5/19/2011
VPOP	Duncan Schlicht	9/1/2011

PIP IMPROVED
PIPING PRODUCTS, INC.

TITLE: IPS Flange Adapter Submittal

UNLESS OTHERWISE NOTED, ALL DIMENSIONS IN INCHES

SIZE: C PART NO: IPS Flange Adapter Submittal SALES NO: SCALE: REV 4 SHEET 1 OF 1

Ongoing engineering design efforts may affect the technical information listed in our publications.

RELEASED - EFFECTIVE