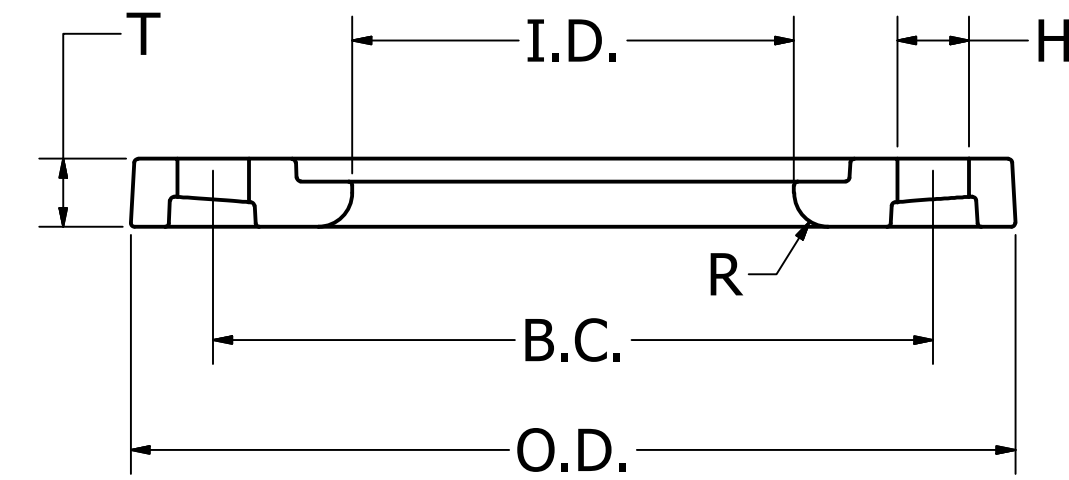
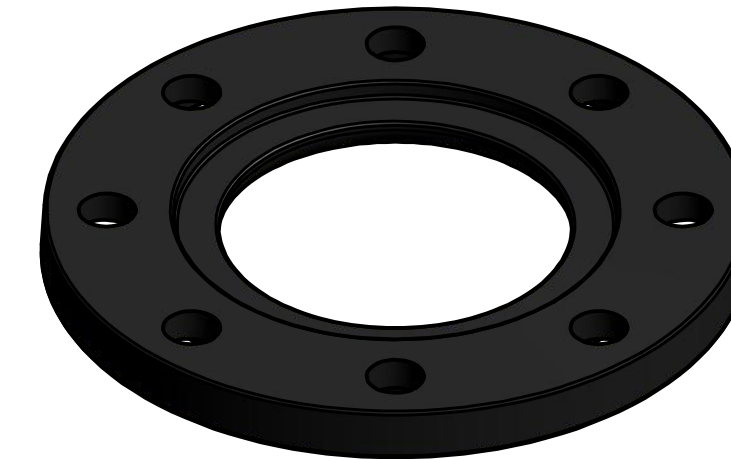


Material: Glass reinforced polypropylene with IPP Deltaflex ductile iron insert

REVISION HISTORY		
REV	DESCRIPTION	DATE
1	VALID	08/02/11

Pipe Diameter (in)	SDR	O.D.	T.	I.D.	Bolt Count	Bolt Hole Size (H)	Bolt Hole Circle (BC)	R	Weight (lbs)	Operating Pressure (psi)
2"	7	6.460	0.710	2.630	4	0.750	4.750	0.28	1.8	267
2"	13.5	6.500	0.710	2.460	4	0.750	4.750	0.28	1.5	128
3"	7	7.720	0.730	3.750	4	0.750	6.000	0.28	2.4	267
3"	13.5	7.800	0.710	3.600	4	0.750	6.000	0.35	2.0	128
4"	7	9.330	0.980	4.750	8	0.750	7.500	0.35	4.2	267
4"	13.5	9.210	0.710	4.600	8	0.750	7.500	0.35	2.5	128
6"	7	11.690	1.180	7.090	8	0.880	9.500	0.35	7.1	267
6"	13.5	11.570	0.790	6.750	8	0.870	9.500	0.35	4.0	128
8"	7	13.940	1.340	8.880	8	0.880	11.750	0.35	11.6	267
8"	13.5	13.860	1.100	8.750	8	0.870	11.750	0.35	7.5	128
10"	7	16.730	1.520	11.000	12	1.000	14.250	0.35	16.0	267
10"	13.5	16.610	1.220	10.920	12	1.020	14.250	0.35	10.5	128
12"	7	19.570	2.010	13.190	12	1.000	17.000	0.35	28.2	267
12"	13.5	19.370	1.610	12.920	12	1.020	17.000	0.35	17.5	128
14"	7	21.340	2.050	14.380	12	1.130	18.750	0.35	35.7	267
14"	13.5	21.260	1.610	14.380	12	1.140	18.750	0.35	23.0	128
16"	7	23.900	2.440	16.380	16	1.130	21.250	0.35	66.4	267
16"	13.5	23.820	1.750	16.190	12	1.140	21.250	0.35	30.0	128
18"	7	25.510	2.440	18.380	16	1.250	22.750	0.35	60.6	267
18"	13.5	25.510	1.910	18.380	16	1.260	22.750	0.35	34.0	128
20"	7	27.990	2.680	20.380	20	1.250	25.000	0.35	93.5	267
20"	13.5	27.870	2.130	20.380	20	1.260	25.000	0.35	42.0	128
22"	7	30.310	3.190	22.380	20	1.380	27.250	0.35	104.9	267
24"	7	32.520	3.190	24.380	20	1.380	29.500	0.35	142.2	267
24"	13.5	32.520	2.240	24.380	20	1.380	29.500	0.35	58.5	128
28"	7	37.200	3.900	28.380	28	1.380	34.000	0.35	224.4	267
28"	13.5	36.950	2.990	28.390	28	1.380	34.000	0.35	105.0	128
30"	7	39.210	3.900	30.380	28	1.380	36.000	0.35	247.1	267
30"	13.5	39.450	3.130	30.380	28	1.380	36.000	0.35	119.0	128
36"	13.5	46.650	3.860	36.380	32	1.610	42.750	0.35	197.0	128



Notes		
Class 150 Bolt Circle. Mates with ANSI B16.5, B16.47, AWWA C207		
For use on HDPE and PP piping systems; Highly corrosion resistant		
DRAWN	8/2/2011	
Matt Graff		
ENG	8/5/2011	
Ellis Clark		
QA	8/24/2011	
Adil Nasir		TITLE
VPOP	8/19/2011	Polypropylene Encapsulated Ductile Iron, ANSI Flanges / Backup Rings Submittal
Duncan Schlicht		
UNLESS OTHERWISE NOTED, ALL DIMENSIONS IN INCHES		SIZE PART NO
		C PPDI
		SALES NO
		SCALE
		REV 1 SHEET 1 OF 1

Ongoing engineering design efforts may affect the technical information listed in our publications.