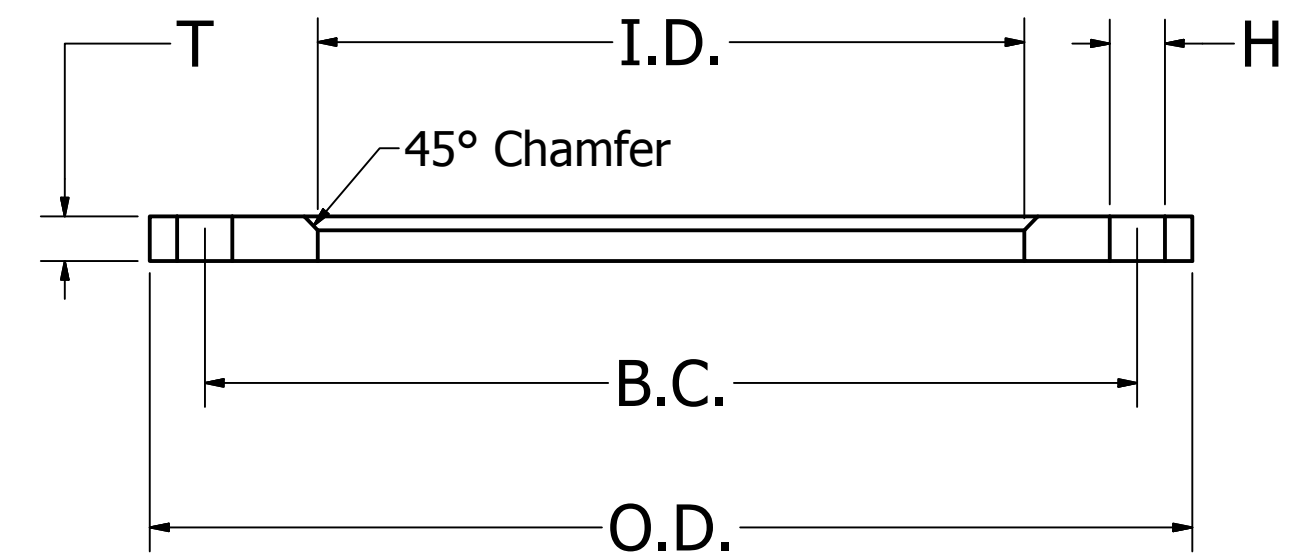
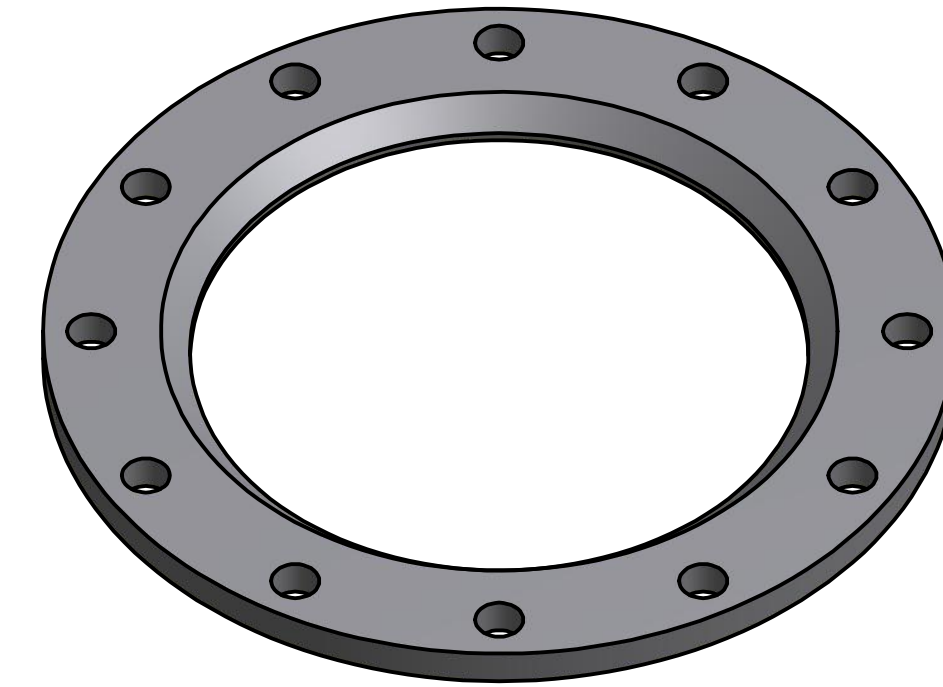


Material: A36 Plate Steel

REVISION HISTORY		
REV	DESCRIPTION	DATE
1	VALID	08/03/11

Dimensions								
Pipe Diameter (in)	O.D.	I.D.	Bolt Hole Circle (BC)	Bolt Count	Bolt Hole Size (H)	T	Weight (lbs)	Operating Pressure (psi)
1.5"	5.000	1.970	3.880	4	0.630	0.630	2.5	275
2"	6.000	2.440	4.750	4	0.750	0.630	3.6	275
2.5"	7.000	3.250	5.500	4	0.750	0.630	4.7	275
3"	7.500	3.570	6.000	4	0.750	0.630	5.4	275
4"	9.000	4.570	7.500	8	0.750	0.630	6.9	239
5"	10.000	5.660	8.500	8	0.875	0.630	7.7	247
6"	11.000	6.720	9.500	8	0.875	0.690	9.5	227
8"	13.500	8.720	11.750	8	0.875	0.690	14.0	117
10"	16.000	10.880	14.250	12	1.000	0.690	17.5	68
12"	19.000	12.880	17.000	12	1.000	0.810	31.0	60
14"	21.000	14.190	18.750	12	1.125	0.940	45.0	77
16"	23.500	16.190	21.250	16	1.125	1.000	57.5	63
18"	25.000	18.190	22.750	16	1.250	1.060	60.5	60
20"	27.500	20.190	25.000	20	1.250	1.130	75.5	56
22"	29.500	22.190	27.250	20	1.375	1.190	85.0	50
24"	32.000	24.190	29.500	20	1.375	1.250	106.0	49
26"	34.250	26.380	31.750	24	1.375	1.310	120.0	40
28"	36.500	28.250	34.000	28	1.375	1.310	134.0	38
30"	38.750	30.250	36.000	28	1.375	1.380	157.0	39
32"	41.750	32.250	38.500	28	1.625	1.500	203.0	41
36"	46.000	36.190	42.750	32	1.625	1.630	254.0	39
40"	50.750	40.250	47.250	36	1.625	1.630	303.0	31
42"	53.000	42.250	49.500	36	1.625	1.750	352.0	33
48"	59.500	48.250	56.000	44	1.625	1.750	416.0	24
54"	66.250	54.250	62.750	44	1.875	2.130	600.0	27
60"	73.000	60.250	69.250	52	1.875	2.250	745.0	—



Notes		
Class 150 Bolt Circle. Mates with ANSI B16.5, B16.47, AWWA C207		
Finish: Red oxide primer or Hot dipped galvanized		
DRAWN	8/2/2011	
Matt Graff		
ENG	8/2/2011	
Ellis Clark		
QA	9/2/2011	
Adil Nasir	9/12/2011	TITLE
VPOP		PS-BUPP Chamfered Plate Steel for HDPE
Duncan Schlicht		
UNLESS OTHERWISE NOTED, ALL DIMENSIONS IN INCHES		SIZE PART NO
		C BUPP Submittal
		SALES NO
		SCALE
		REV 1 SHEET 1 OF 1

Ongoing engineering design efforts may affect the technical information listed in our publications.