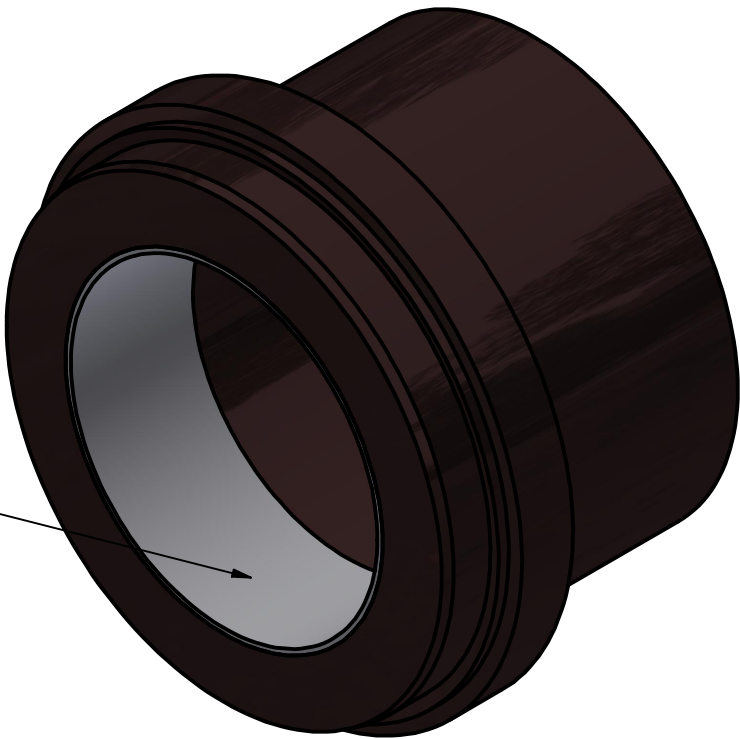


Material: HDPE - PE4710/PE100

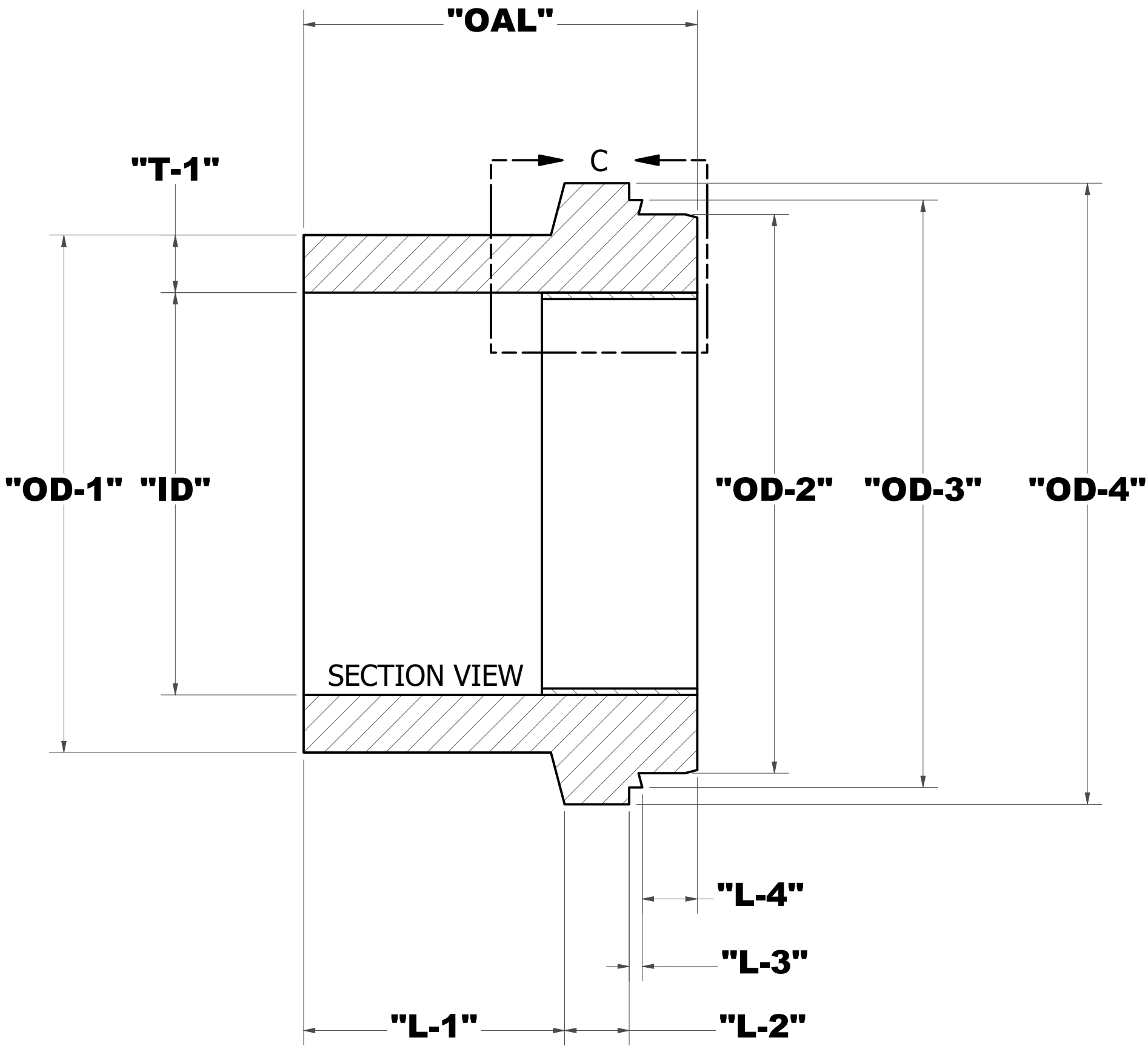
Wall Thickness (T-1) and Internal Diameter (ID)																
Size	SDRs															
	9		11		13.5		15.5		17		21 *		26 *		32.5 *	
	T-1	ID	T-1	ID	T-1	ID	T-1	ID	T-1	ID	T-1	ID	T-1	ID	T-1	ID
24"	2.667	18.667	2.182	19.636	1.778	20.444	1.548	20.903	1.412	21.176	1.143	21.176	0.923	21.176	0.738	21.176
30"	3.33	23.33	2.73	24.55	2.22	25.56	1.94	26.13	1.76	26.47	1.43	26.47	1.15	26.47	0.92	26.47
36"			3.273	29.455	2.667	30.667	2.323	31.355	2.118	31.765	1.714	31.765	1.385	31.765	1.108	31.765
42"			3.82	34.36	3.11	35.78	2.71	36.58	2.47	37.06	2.00	37.06	1.62	37.06	1.29	37.06
48"					3.556	40.889	3.097	41.806	2.824	42.353	2.286	42.353	1.846	42.353	1.477	42.353

* FROM SDR21 - SDR32.5 (WILL BE TAPER BORE FROM SDR17)

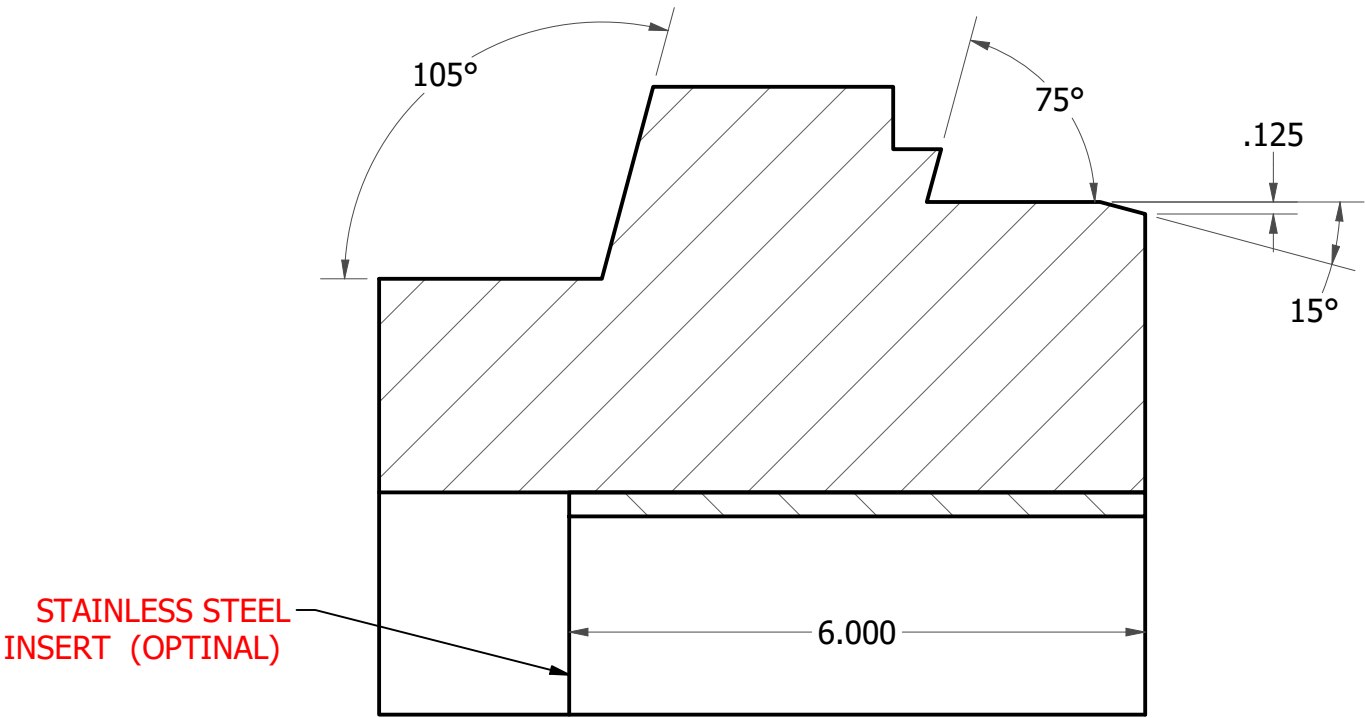
REVISION HISTORY		
REV	DESCRIPTION	DATE
1	VALID - ORIGINAL DWG	05/20/11
2	UPDATE TITLE BLOCK	9/16/2013
3	ADD OPTIONAL INSERTS	9/02/2020
4	REVISED PRODUCT SPECIFICATION TABLES	9/18/2023



STAINLESS STEEL
INSERT (OPTIONAL)



Dimensions									
Size	OD-1	OD-2	OD-3	OD-4	OAL	L-1	L-2	L-3	L-4
24"	24.000	25.800	26.900	28.000	15.220	10.095	2.500	0.500	2.125
30"	30.00	32.00	33.29	35.01	19.00	12.50	3.00	1.00	2.50
36"	36.000	38.300	39.590	41.820	19.000	12.500	3.000	1.000	2.500
42"	42.00	44.50	45.79	47.50	21.00	14.50	3.00	1.00	2.50
48"	48.000	50.800	52.090	54.090	21.000	14.500	3.000	1.000	2.500



STAINLESS STEEL
INSERT (OPTIONAL)

DETAIL C

Stainless steel inserts are optional and must be stated at time of quote request.
Ongoing engineering design efforts may affect the technical information listed in our publications.

UNLESS OTHERWISE NOTED, ALL DIMENSIONS IN INCHES		
	TITLE	
	MJ Adapter Submittal - IPS	